

POPULATION INCIDENCE OF CONGENITAL MICROCEPHALY IN THE CZECH REPUBLIC

Natálie Friedová^{1,2}, Antonín Šípek Jr^{1,3}, Antonín Šípek^{3,4,8}, Vladimír Gregor^{3,4,8}, Jan Klaschka^{5,6}, Marek Malý^{5,7}

¹Institute of Biology and Medical Genetics, First Faculty of Medicine, Charles University, Prague, Czech Republic,

²Department of Internal Medicine, Third Faculty of Medicine, Charles University, Prague, Czech Republic.

³Department of Medical Genetics, Thomayer Hospital, Prague, Czech Republic,

⁴Department of Medical Genetics, Pronatal Sanatorium, Prague, Czech Republic,

⁵Institute of Computer Science of the Czech Academy of Sciences, Prague, Czech Republic,

⁶Institute of Biophysics and Informatics, First Faculty of Medicine, Charles University, Prague, Czech Republic,

⁷National Institute of Public Health, Prague, Czech Republic,

⁸Institute of Medical Genetics, Third Faculty of Medicine, Charles University, Prague, Czech Republic.

Diagnose

ICD-10 Q00 Microcephaly

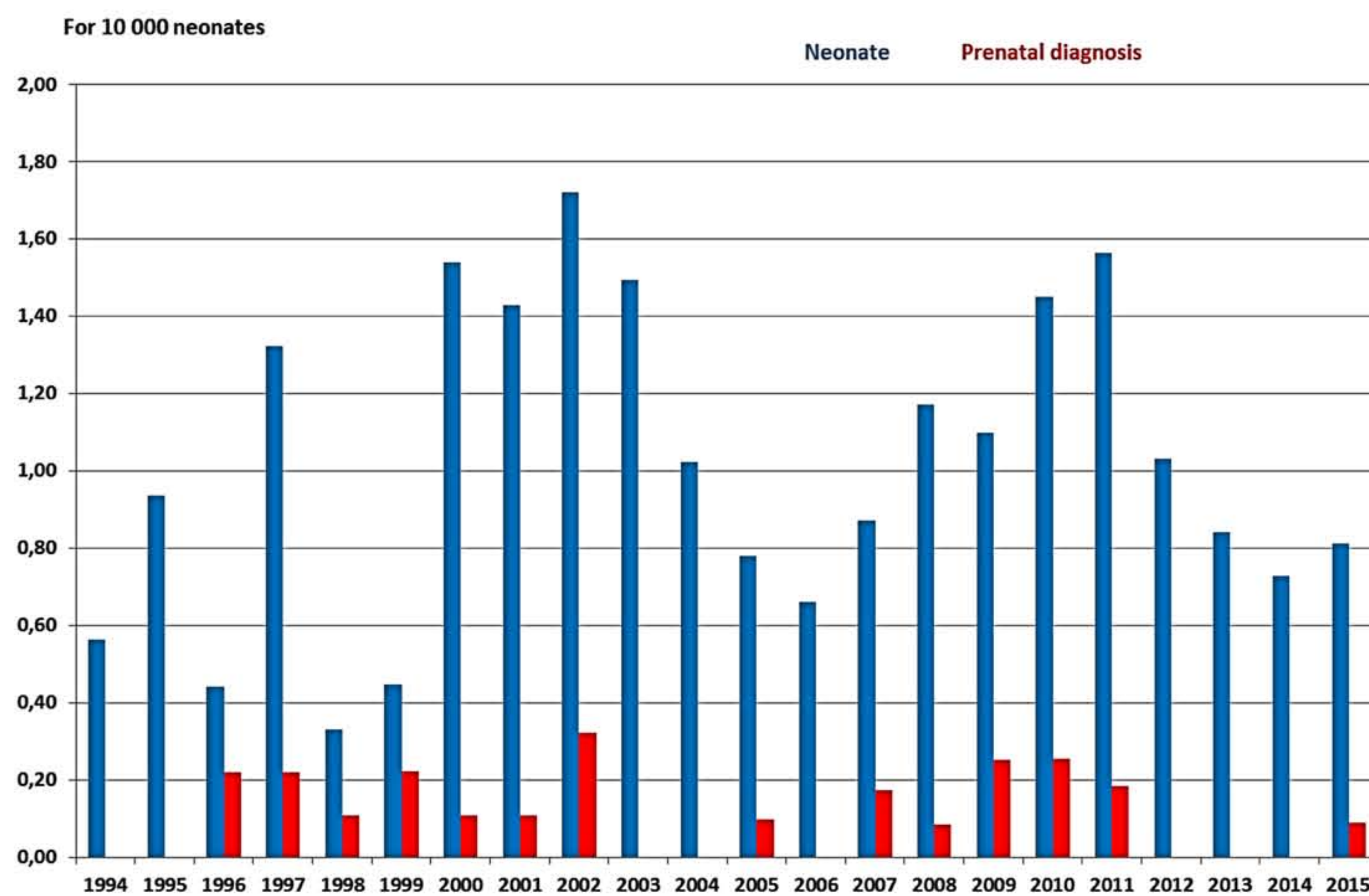
Definition:

- **EUROCAT:** Microcephaly is a reduction in the size of the brain with a skull circumference more than **3 SD** below the mean for sex, age and ethnic origin.
- **WHO:** Neonates with a head circumference more than **2 SD** below the mean.
- **Ministry of Health of the Czech Republic:** Microcephaly is defined as the value of the fronto-occipital circuit under the **3rd percentile**.

Data has been gathered between 1994 and 2015 by

- **Neonates** National Registry of Congenital Anomalies of the Czech Republic Institute of Health Information and Statistics of the Czech Republic
- **Prenatal diagnosis** Society of Medical Genetics And Genomics of the Czech Medical Association

Incidence



Discussion

The frequency of microcephaly in the Czech Republic is **low**.

Most of the cases are diagnosed in the **newborns**.

Relative numbers also fluctuate in the Czech Republic:

- the lowest **0.33** in 2008
- the highest **1.72** in 2002

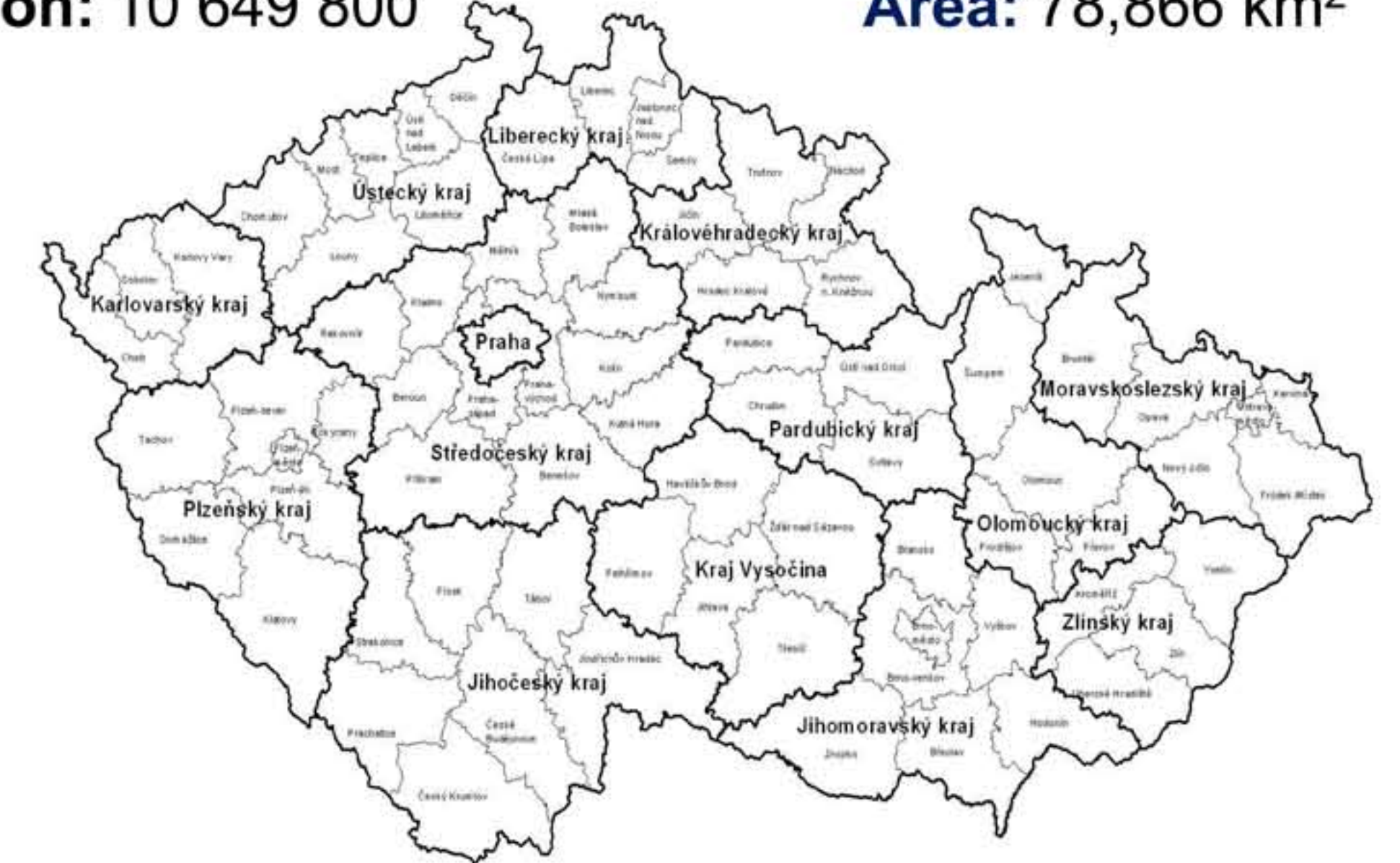
Frequencies **vary** widely in international comparison because different:

- definitions of microcephaly;
- methodics of anomaly surveillance;
- coverage of various registries.

Czech Republic

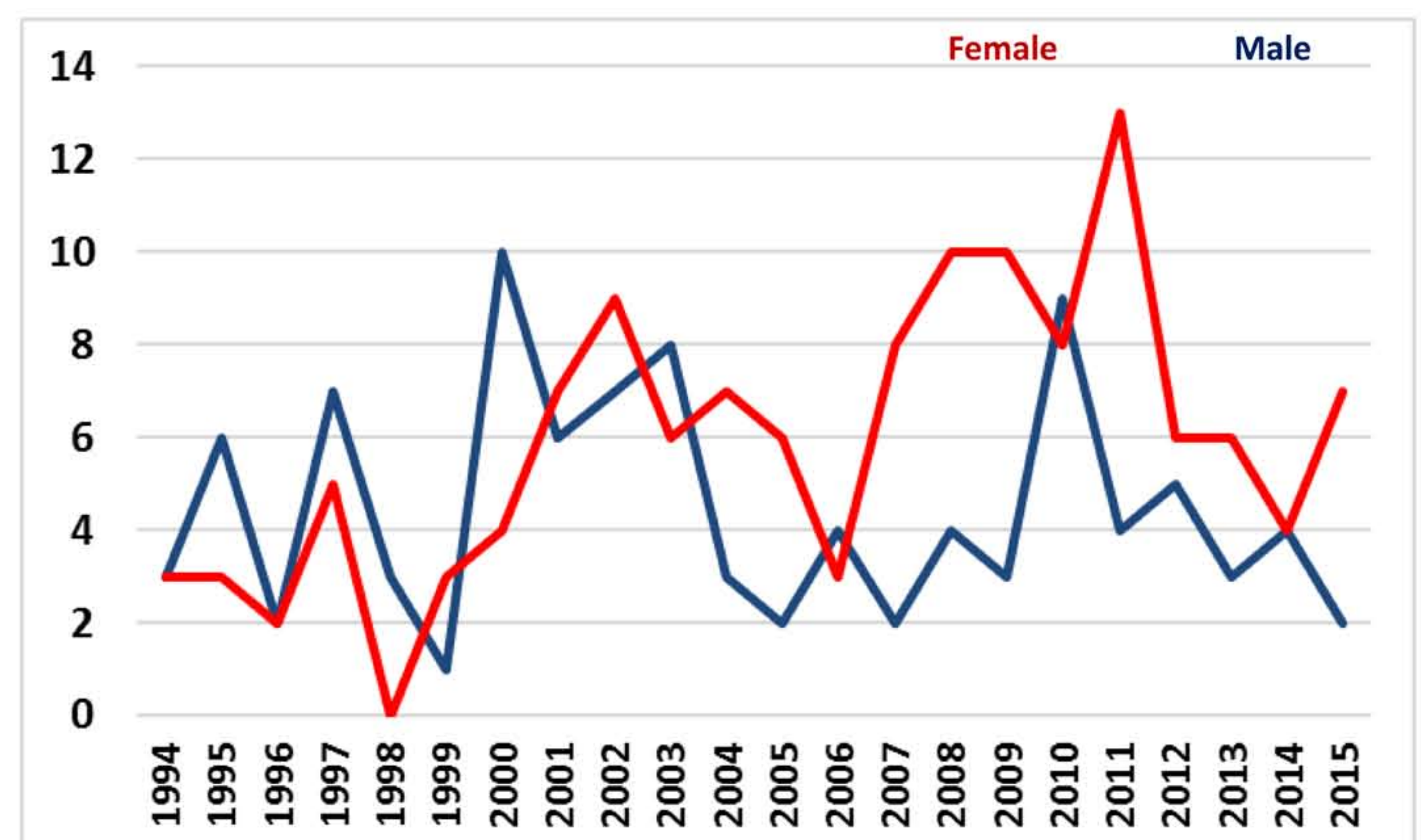
Population: 10 649 800

Area: 78,866 km²



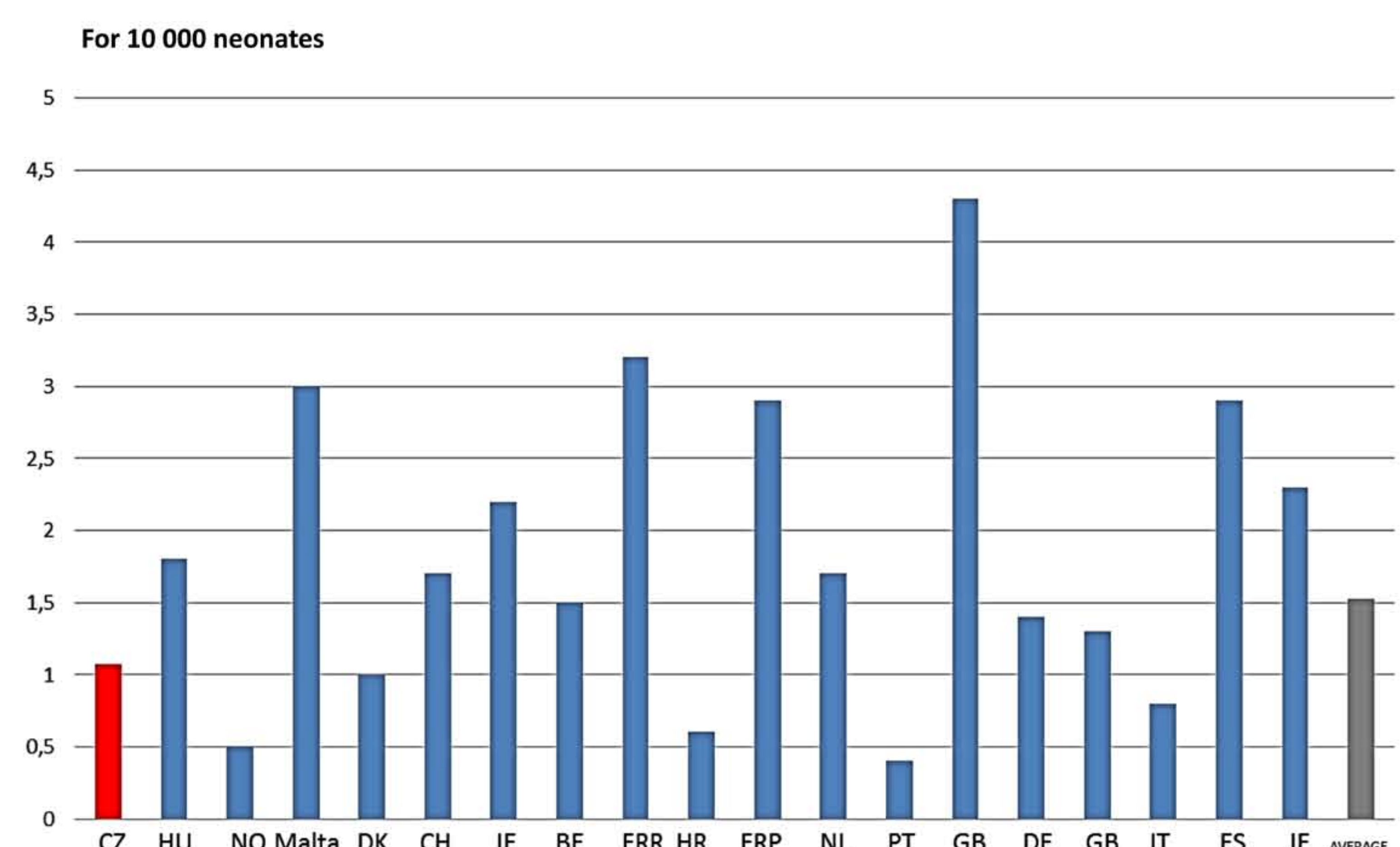
14th largest country in Europe

Sex Ratio



Female to male ratio in Czech Republic is **1.32:1**.

International Comparison



MORRIS, Joan K, Judith RANKIN, Ester GARNE, et al. Prevalence of microcephaly in Europe: population based study. *BMJ* [online]. [cit. 2019-06-10]. DOI: 10.1136/bmj.i4721. ISSN 1756-1833.

The **average incidence** ratio between Czech Republic and European Union is **1.07:1.53**.