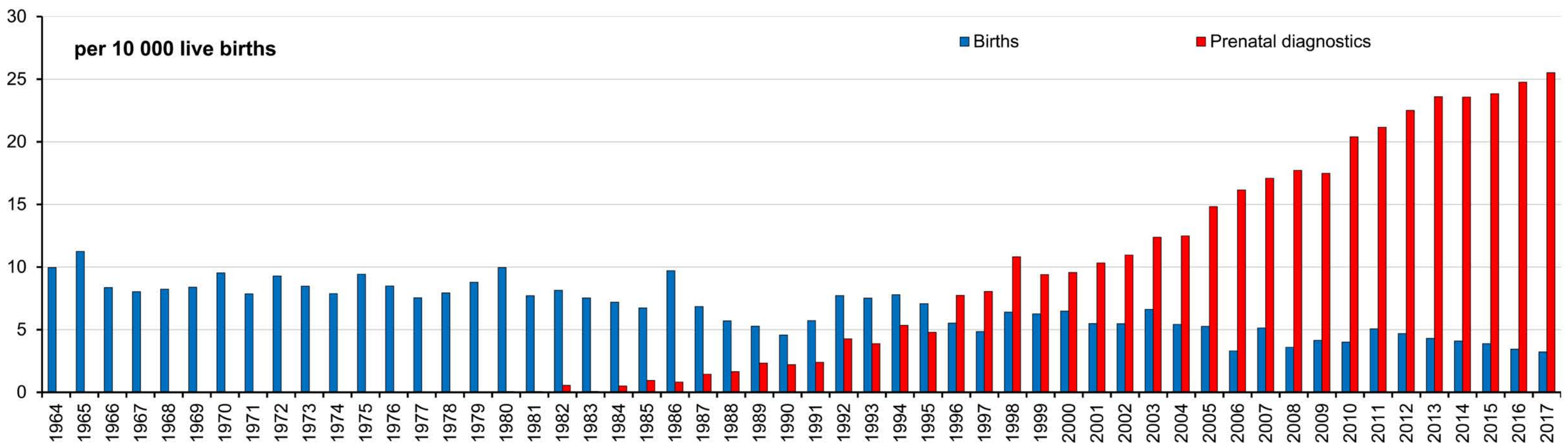
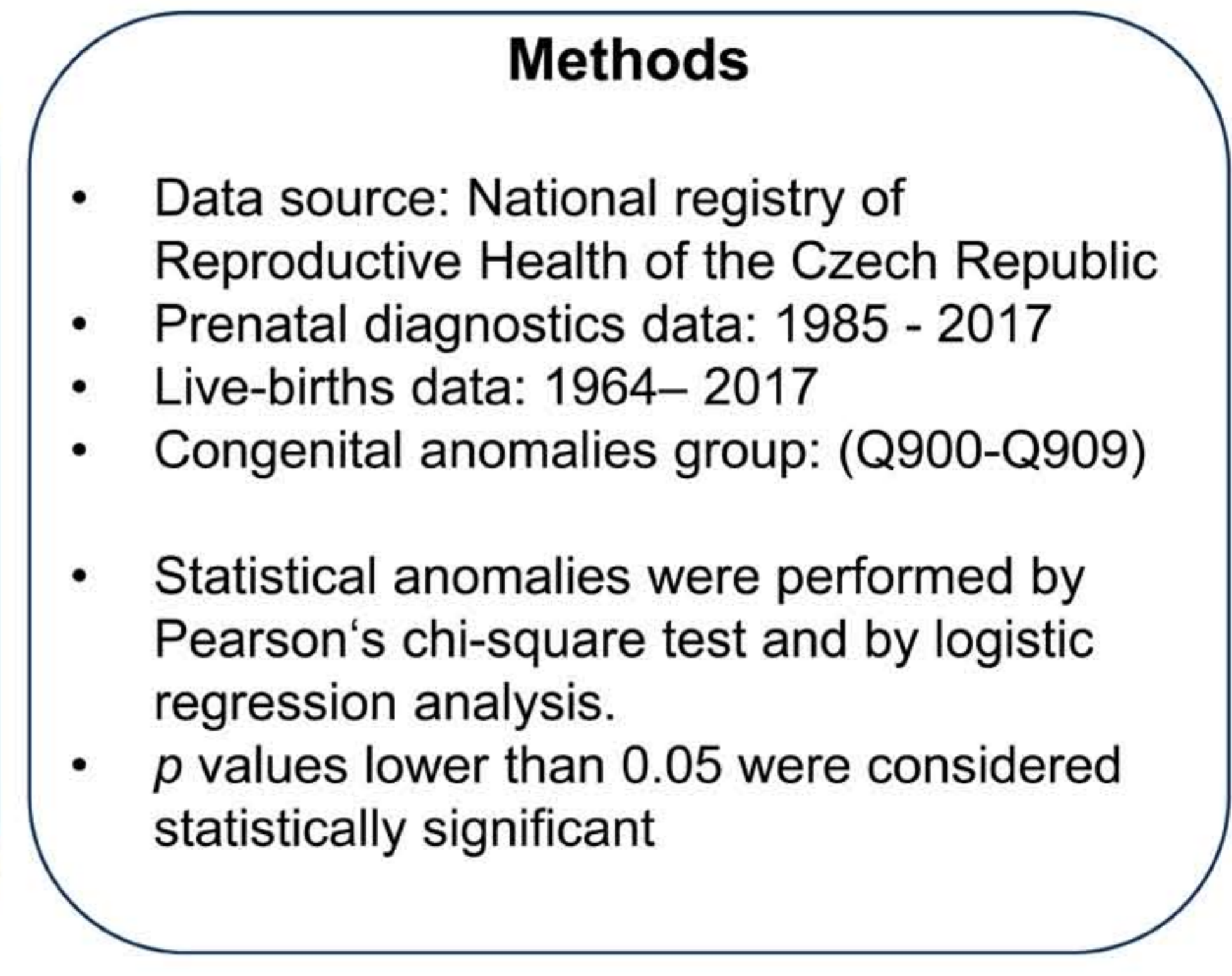
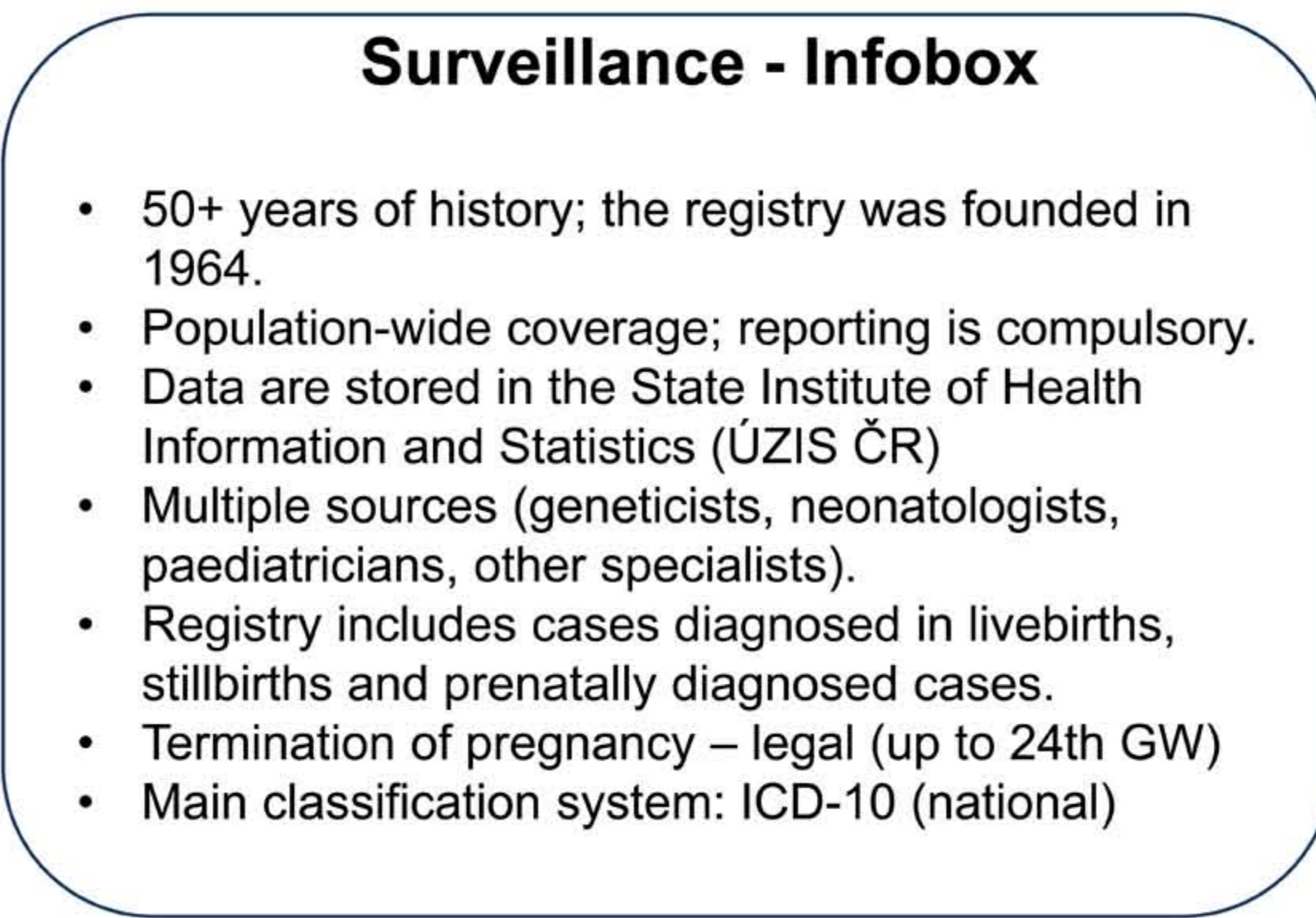


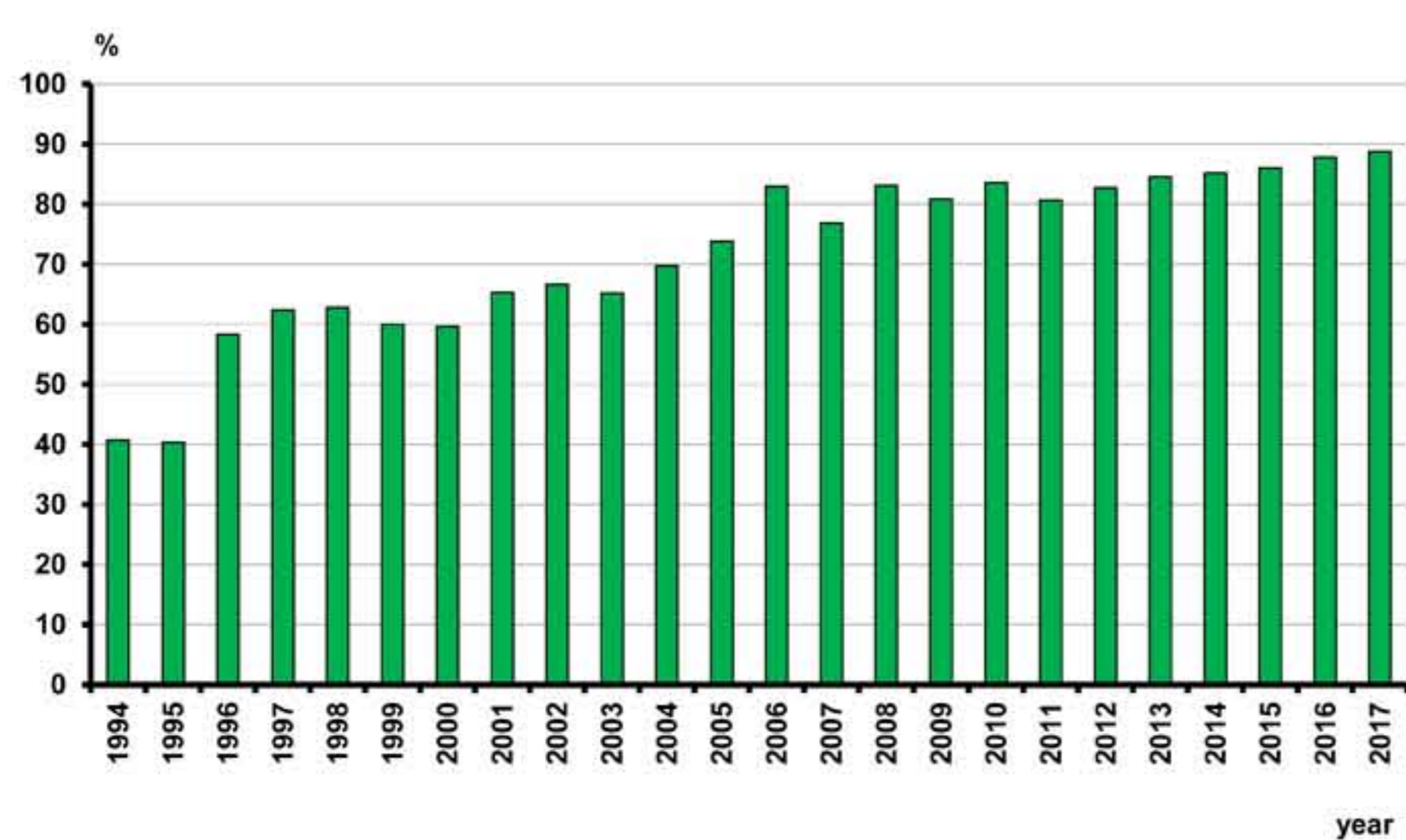
Increasing incidence of the Down syndrome in the Czech Republic: Long-term population-based study

Antonín Šípek^{1,2,3,4}, Vladimír Gregor^{1,2}, Jiří Horáček⁴, Jan Klaschka^{5,6}, Marek Malý^{5,7}, Antonín Šípek Jr^{1,8}

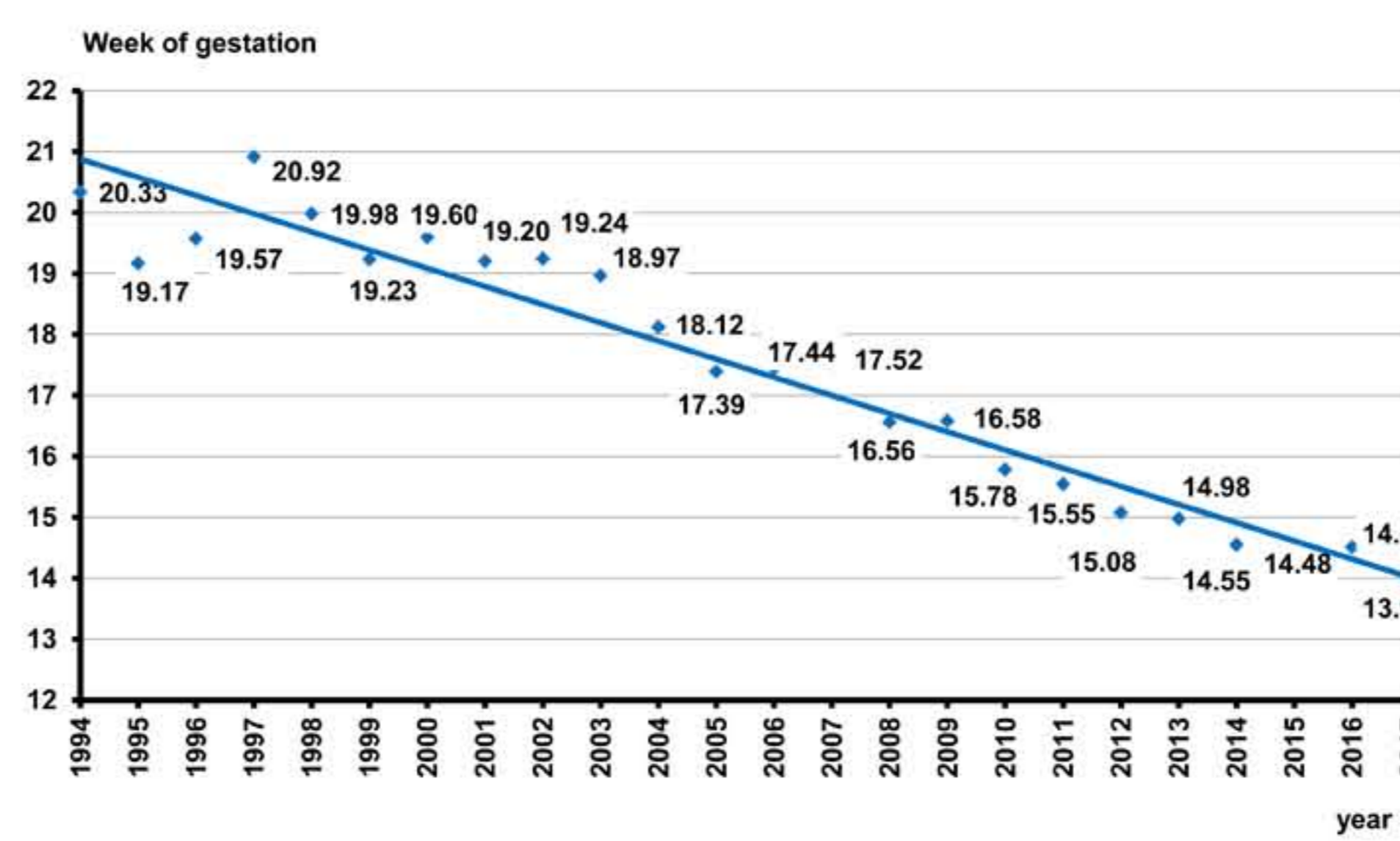
1. Department of Medical Genetics, Thomayer Hospital, Prague, Czech Republic,
2. Department of Medical Genetics, Pronatal Sanatorium, Prague, Czech Republic,
3. Institute of Medical Genetics, 3rd Faculty of Medicine, Charles University, Prague, Czech Republic,
4. GENNET, Prague, Czech Republic,
5. Institute of Computer Science of the Czech Academy of Sciences, Prague, Czech Republic,
6. Institute of Biophysics and Informatics, First Faculty of Medicine, Charles University, Prague, Czech Republic,
7. National Institute of Public Health, Prague, Czech Republic,
8. Institute of Biology and Medical Genetics, 1st Faculty of Medicine, Charles University, Prague, Czech Republic.



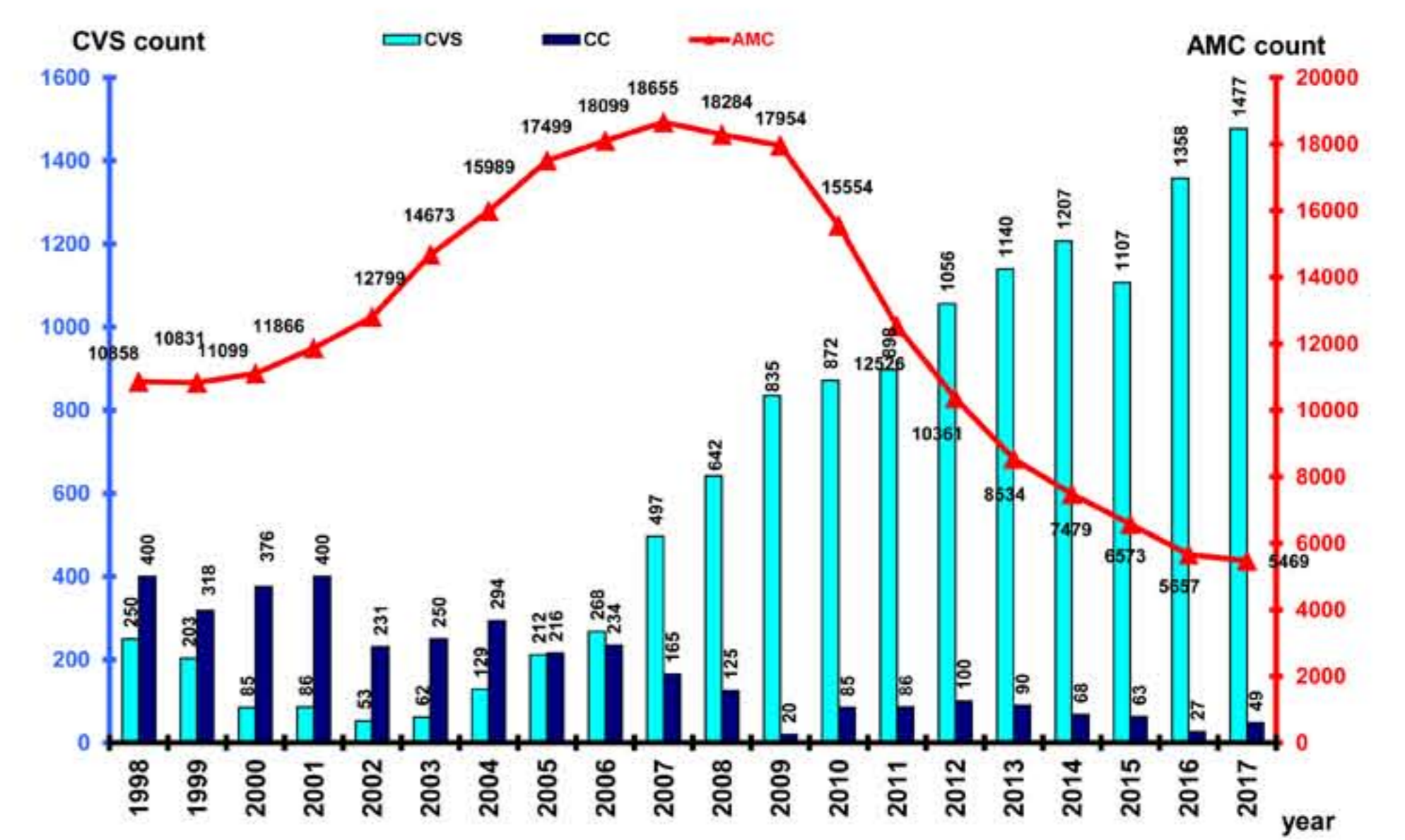
Incidence of Down syndrome in the Czech Republic (1964-2017): relative incidence in births and in prenatally diagnosed cases



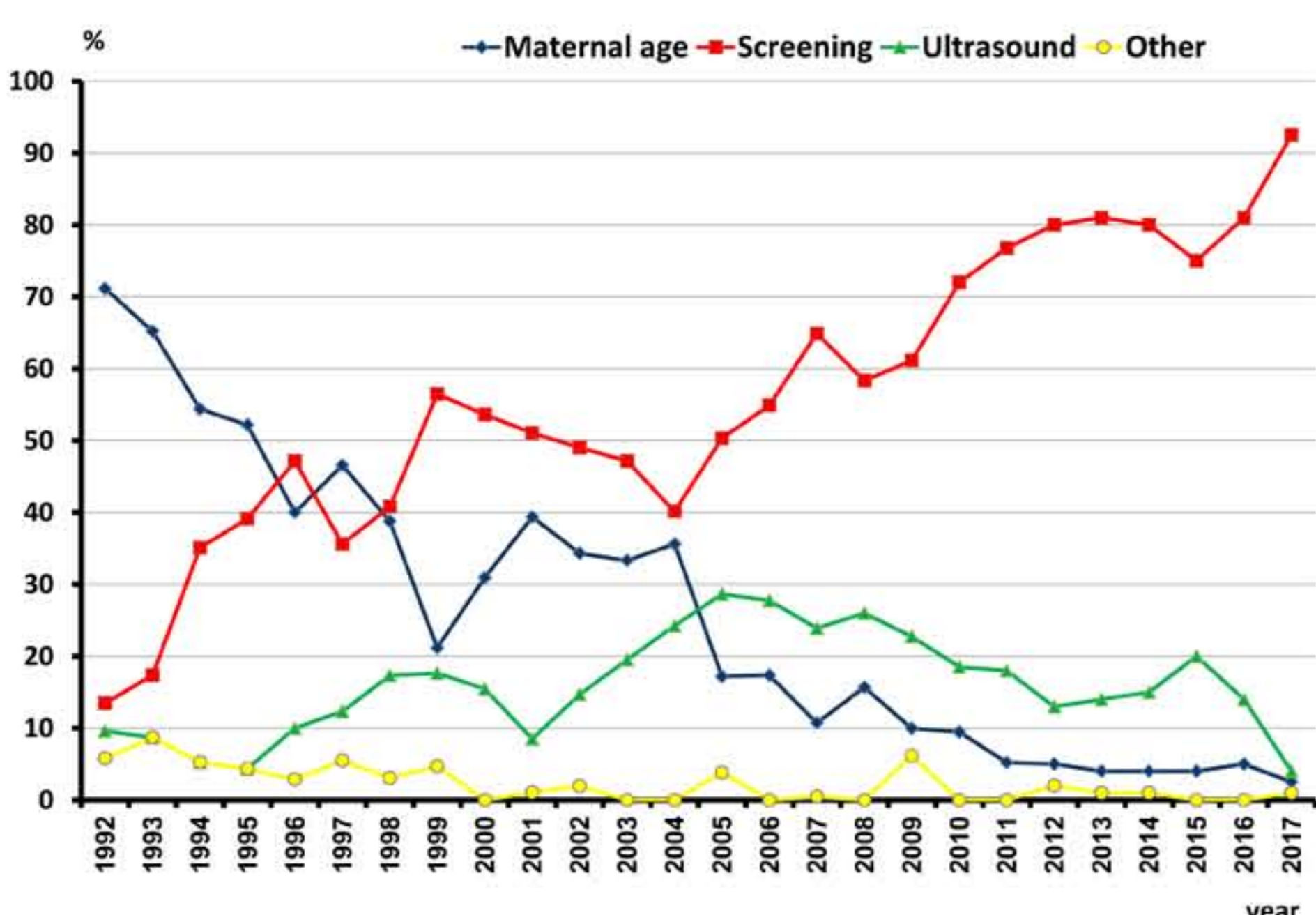
The proportion of elective terminations of pregnancy for associated anomaly – on the total incidence of Down syndrome (Czech Republic; 1994-2017)



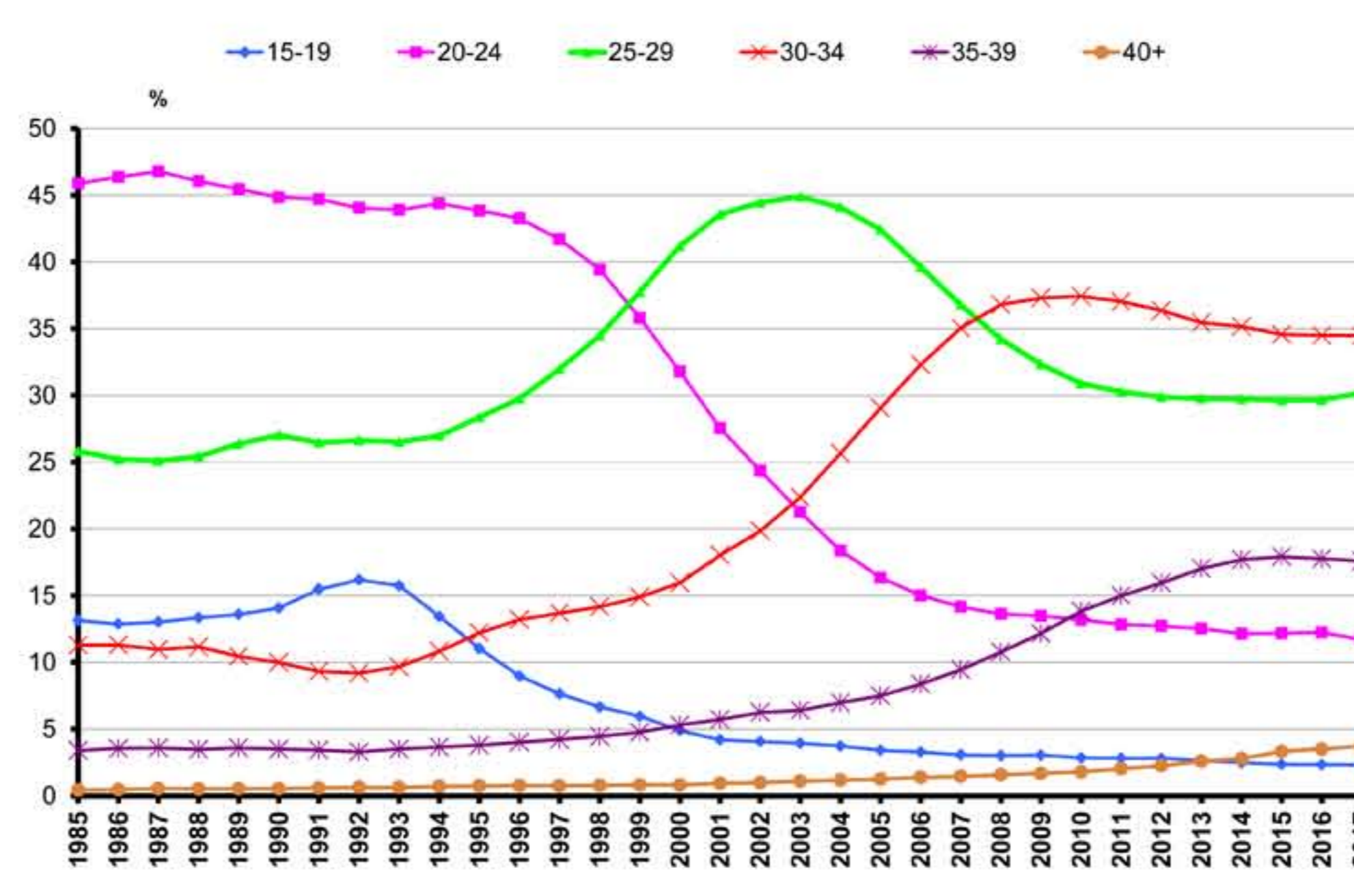
The average week of gestation at the time of positive prenatal diagnosis of Down syndrome (Czech Republic; 1994-2017)



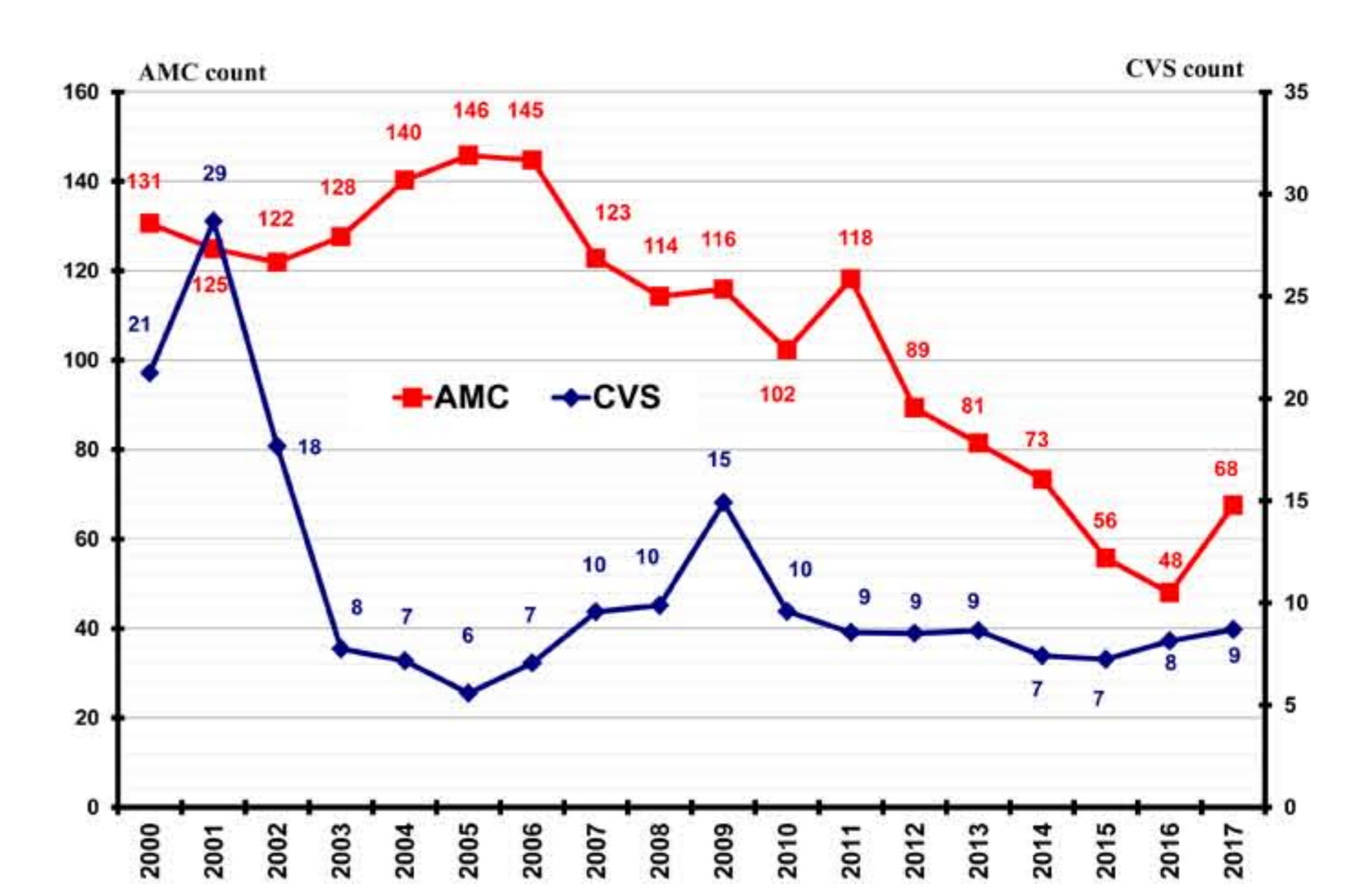
Invasive prenatal diagnostics – absolute numbers of three main invasive diagnostics procedures (Czech Republic; 1998-2017)



Main clinical referral leading to a positive prenatal diagnose of Down syndrome (Czech Republic; 1992-2017)



Demographic trends – proportion of different age-groups of pregnant women (Czech Republic; 1985-2017)



Invasive prenatal diagnostics – number of procedures „needed“ for one positive diagnosis of Down syndrome (Czech Republic; 1998-2017)