

CONGENITAL ANOMALIES IN THE CHILDREN BORN AFTER ASSISTED REPRODUCTION IN THE CZECH REPUBLIC: PILOT STUDY RESULTS

Antonín Šípek^{1,2,3}, Vladimír Gregor^{1,2}, Antonín Šípek Jr^{1,4}, Jiří Horáček^{1,5}, Jan Klaschka^{6,7}, Marek Malý^{6,8}

¹ Department of Medical Genetics, Thomayer Hospital, Prague, Czech Republic

² Department of Medical Genetics, Pronatal Sanatorium, Prague, Czech Republic

³ Institute of Biology and Medical Genetics, 3rd Faculty of Medicine, Charles University, Prague, Czech Republic

⁴ Institute of Medical Biology and Genetics, 1st Faculty of Medicine, Charles University and General University Hospital, Prague, Czech Republic

⁵ Gennet, Centre for Foetal Medicine and Reproductive Genetics, Prague, Czech Republic

⁶ Institute of Computer Science of the Czech Academy of Sciences, Prague, Czech Republic

⁷ Institute of Biophysics and Informatics, First Faculty of Medicine, Charles University, Prague, Czech Republic

⁸ National Institute of Public Health, Prague, Czech Republic

Czech Republic - Infobox

13 regions and the capital Prague; 76 districts in total
Population: 10 553 843
Area: 78,866 km²



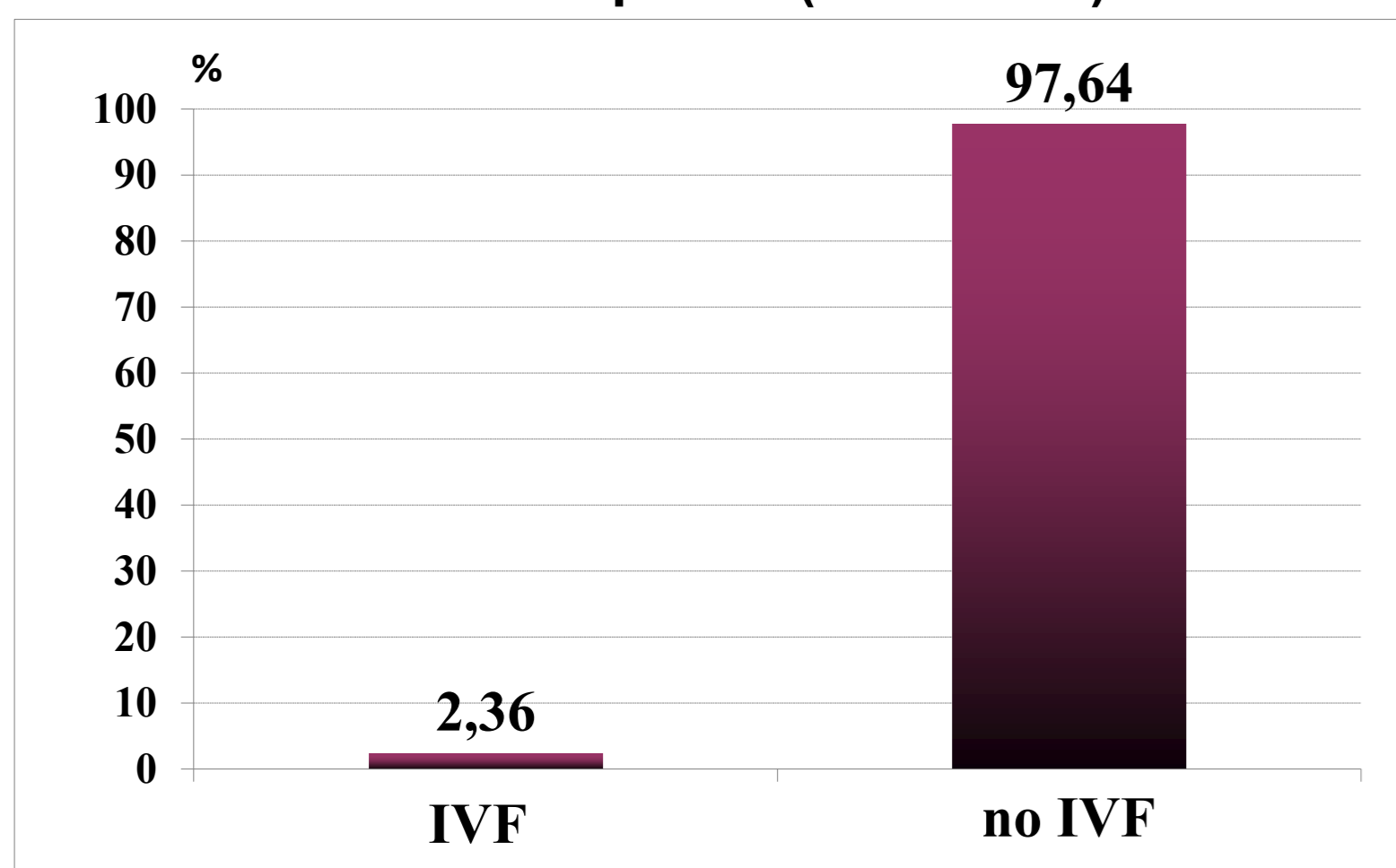
Surveillance - Infobox

- 50+ years of history; the registry was founded in 1964.
- Population-wide coverage; reporting is compulsory.
- Data are stored in the State Institute of Health Information and Statistics (ÚZIS ČR)
- Multiple sources (geneticists, neonatologists, paediatricians, other specialists).
- Registry includes cases diagnosed in livebirths, stillbirths and prenatally diagnosed cases.
- Termination of pregnancy – legal (up to 24th GW)
- Main classification system: ICD-10 (national)

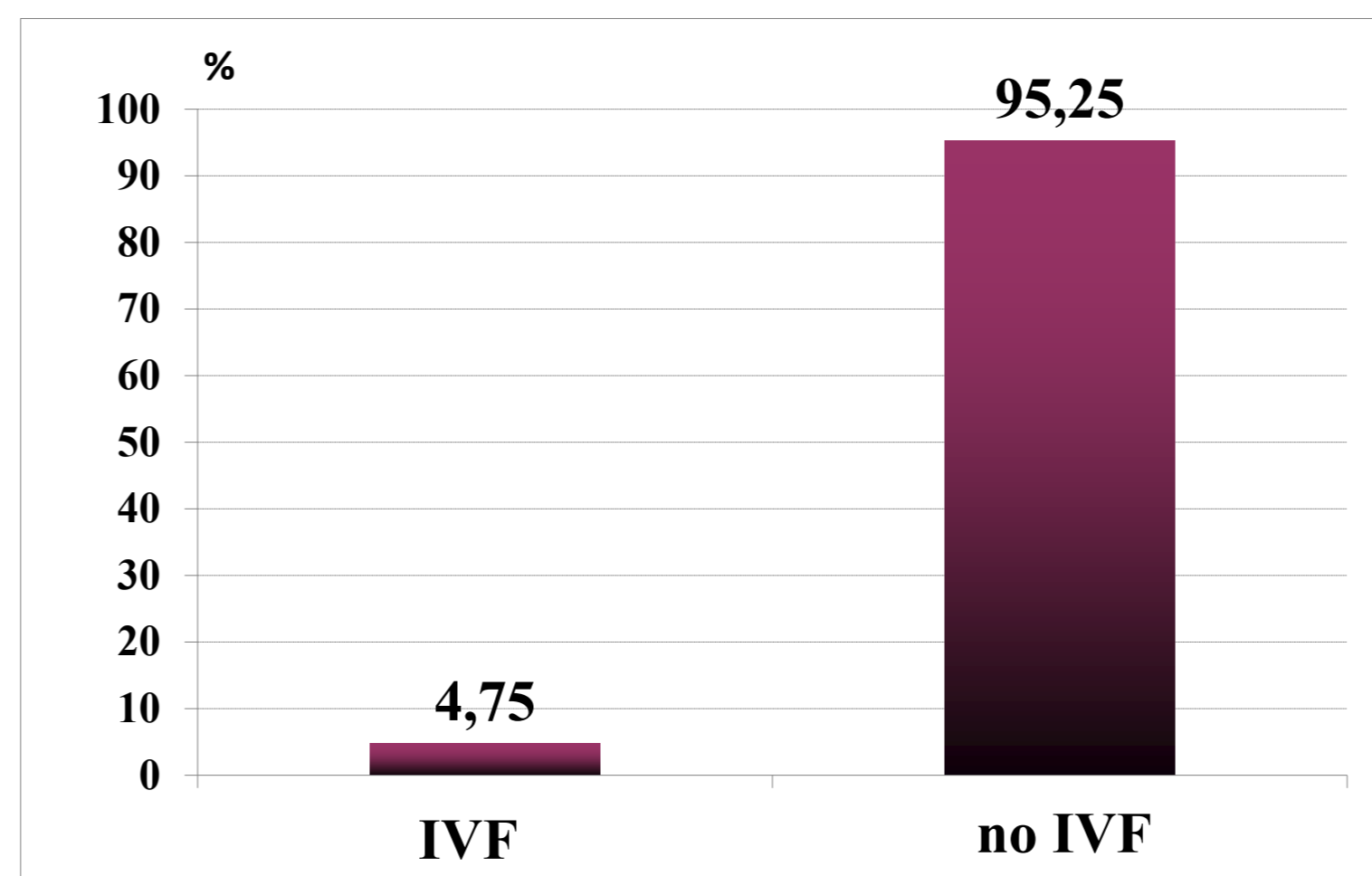
Data sources

- National Registry of Congenital Anomalies
- National Registry of Assisted Reproduction
- Society of Medical Genetics and Genomics

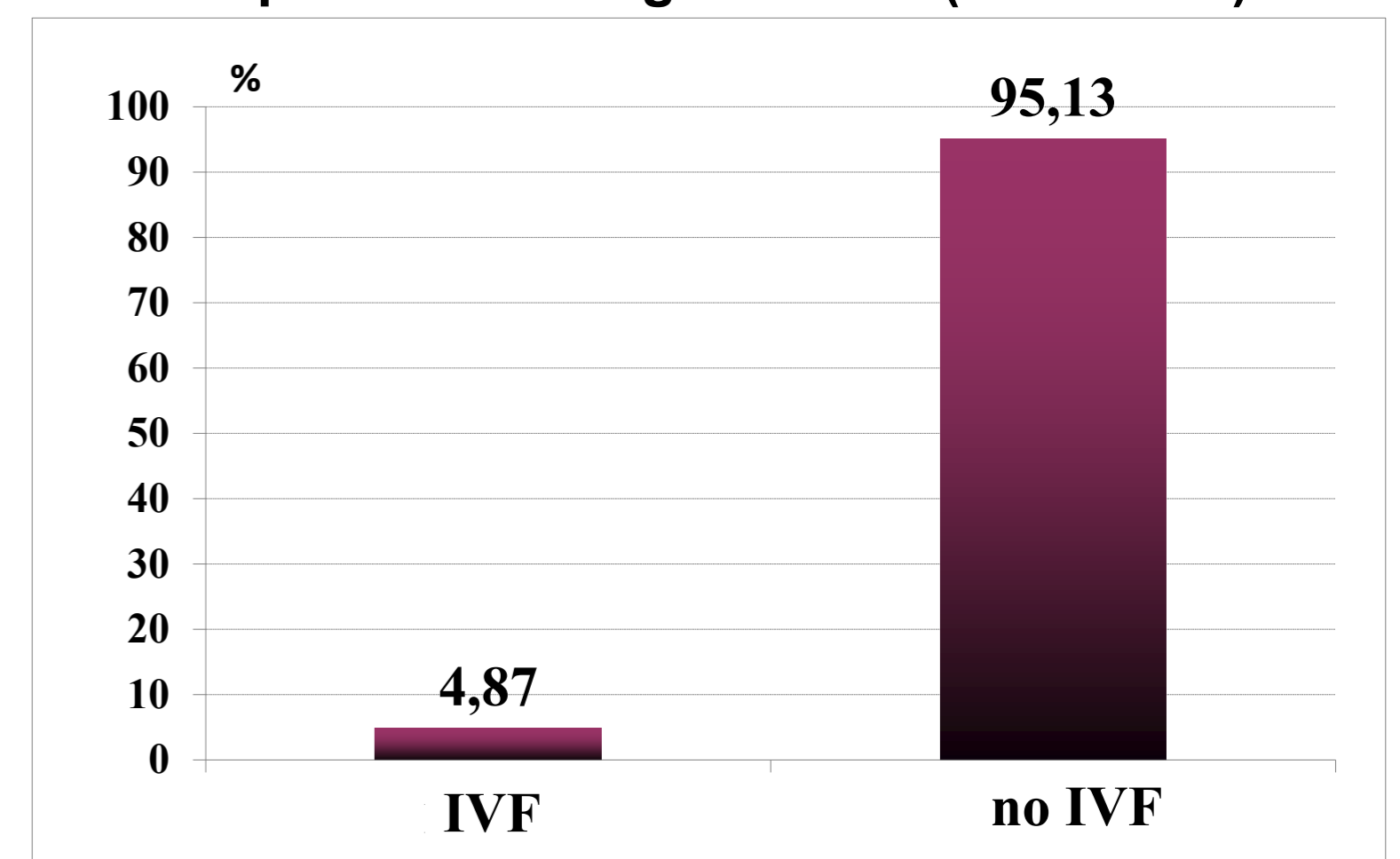
Live births – Proportion of IVF gravidities: Czech Republic (2007-2015)



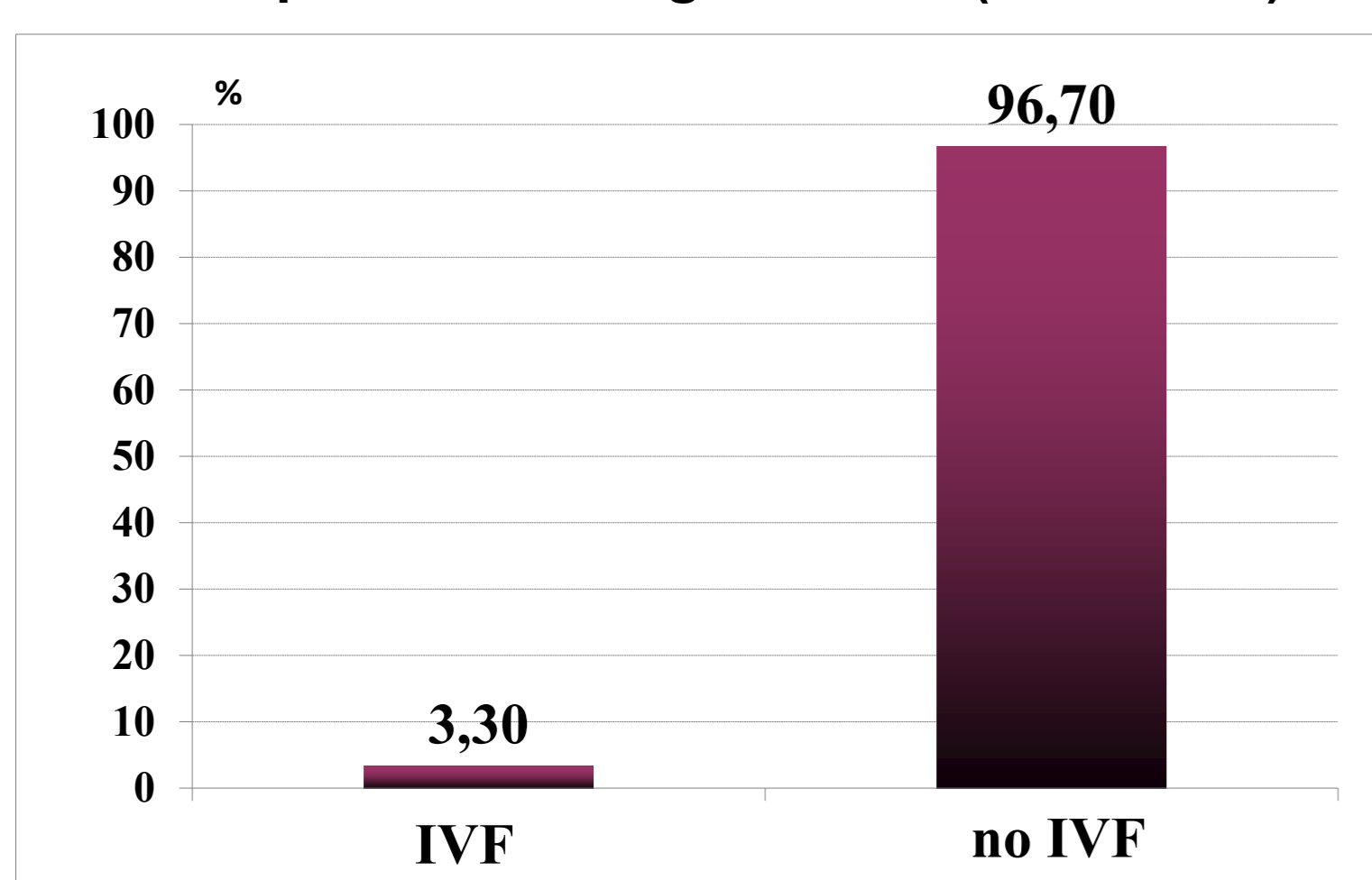
Prenatal diagnostics of anencephaly: Proportion of IVF gravidities (1998-2015)



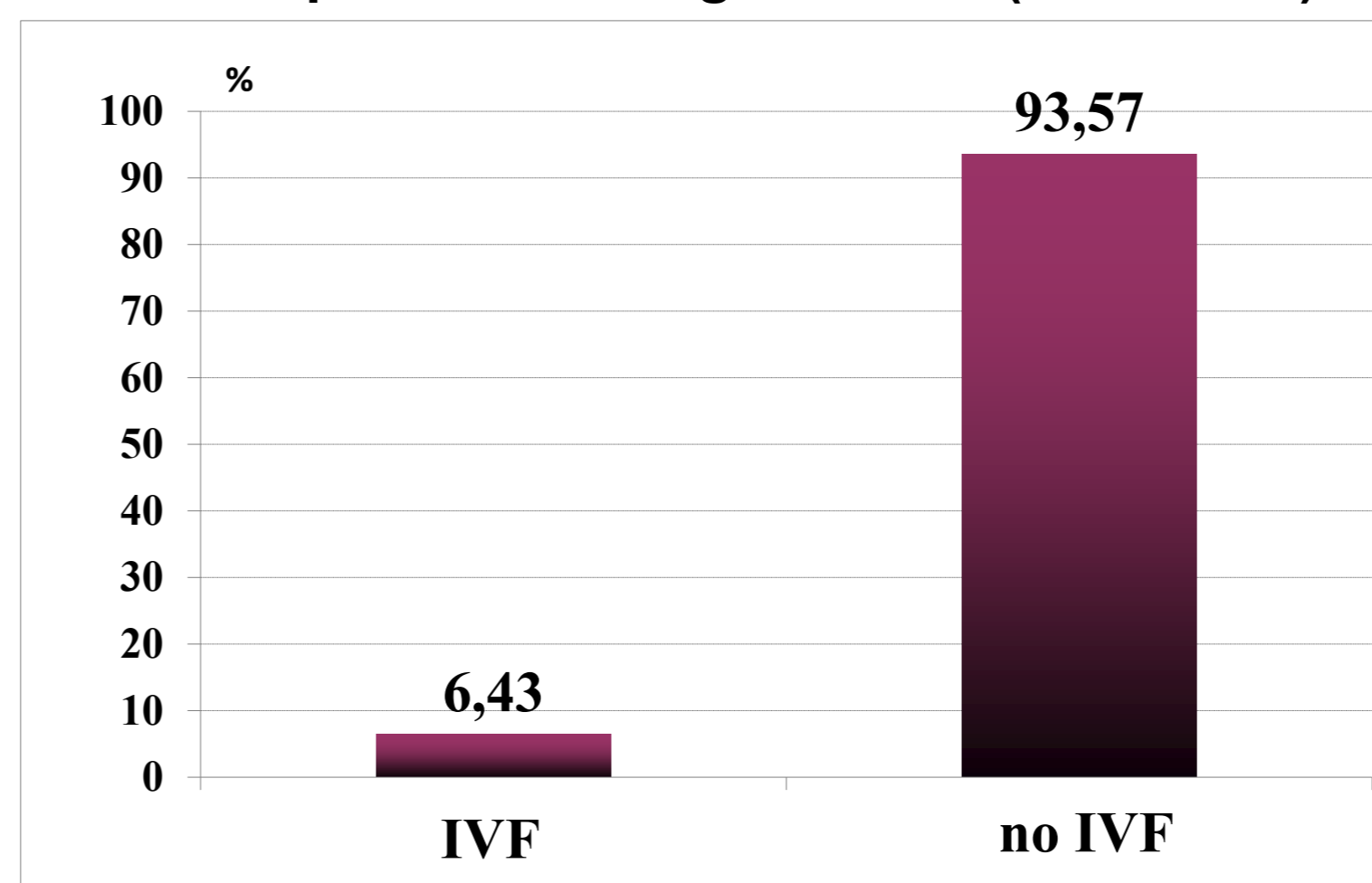
Prenatal diagnostics of spina bifida: Proportion of IVF gravidities (1998-2015)



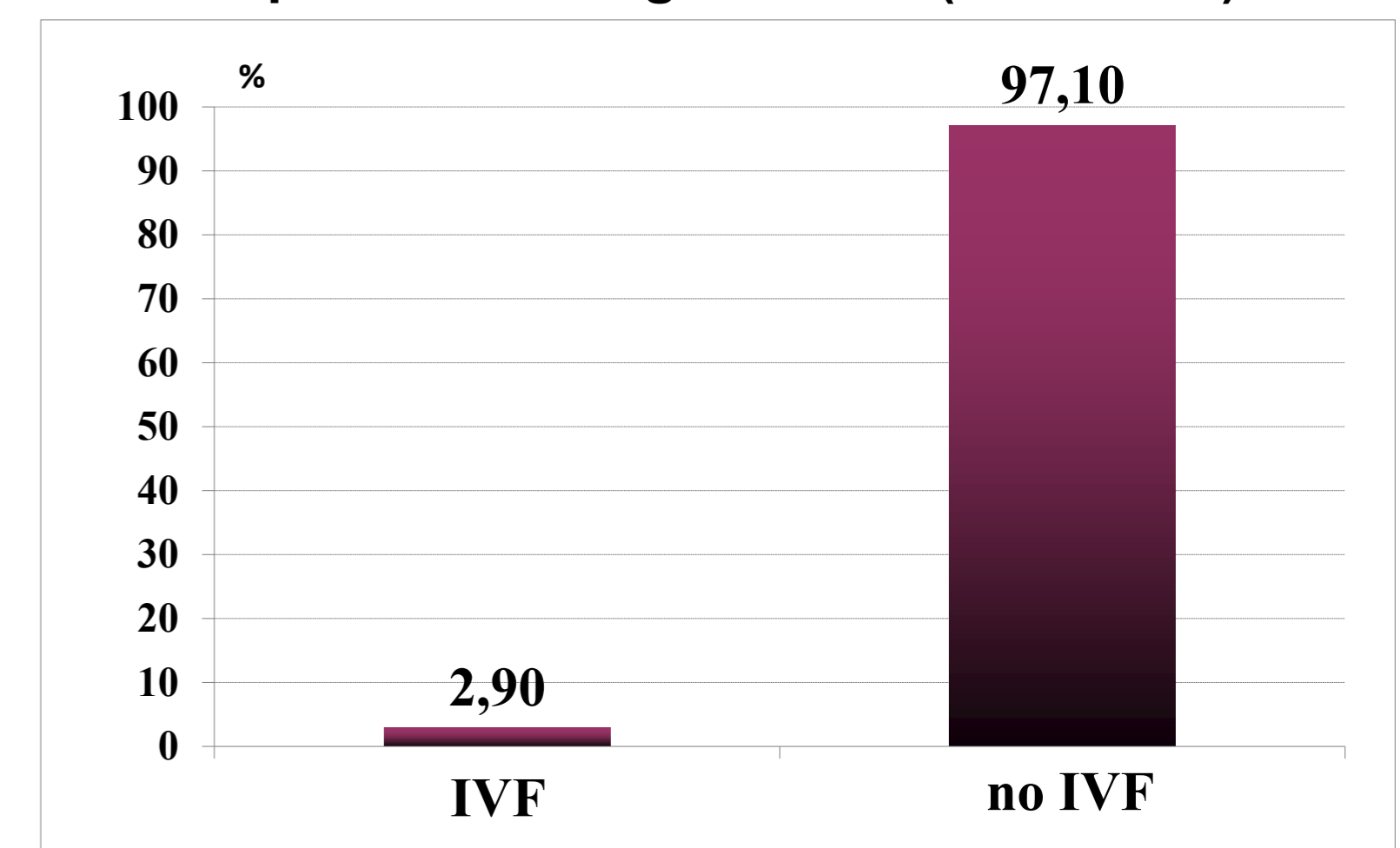
Prenatal diagnostics of encephalocele: Proportion of IVF gravidities (1998-2015)



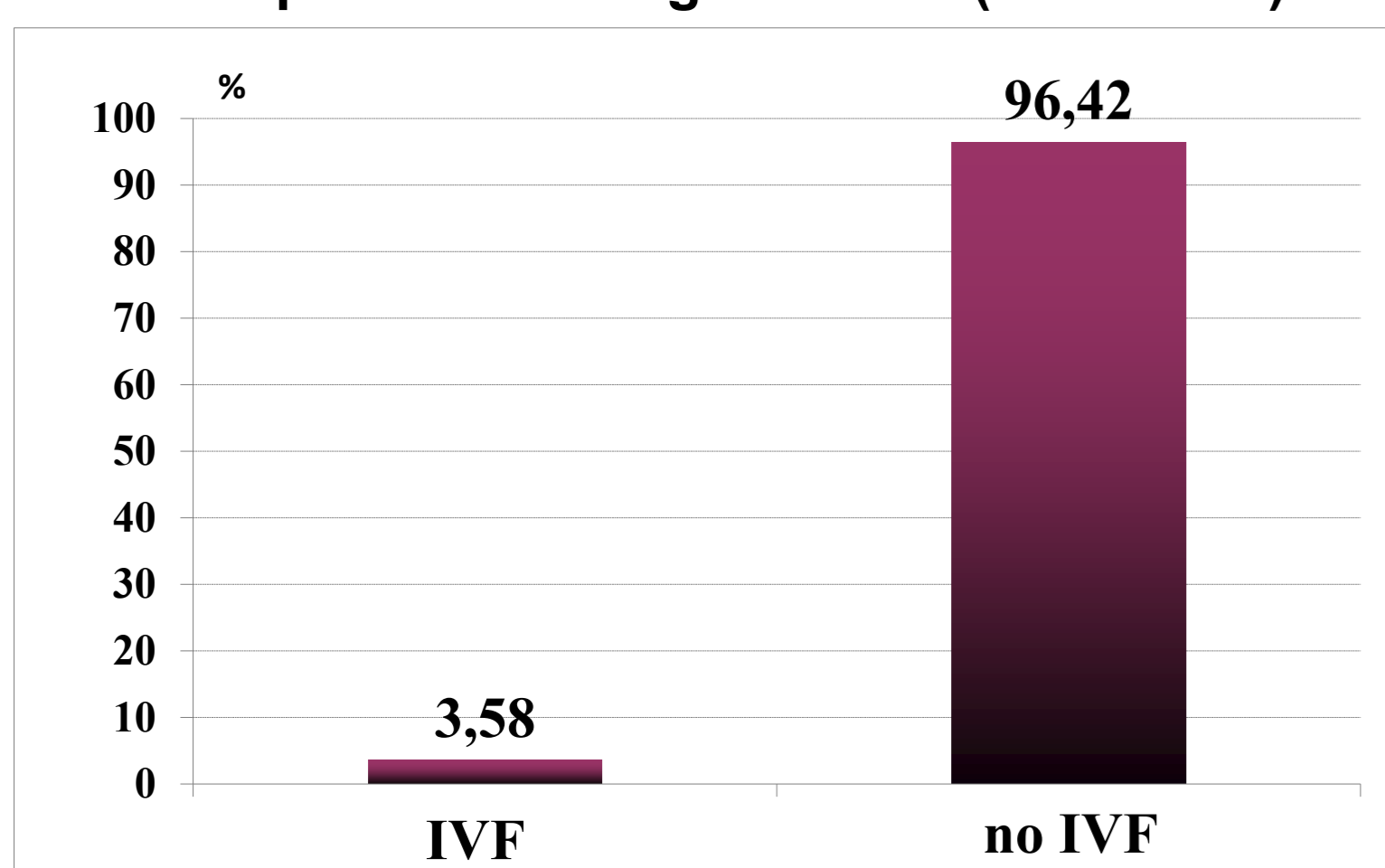
Prenatal diagnostics of omphalocele: Proportion of IVF gravidities (1998-2015)



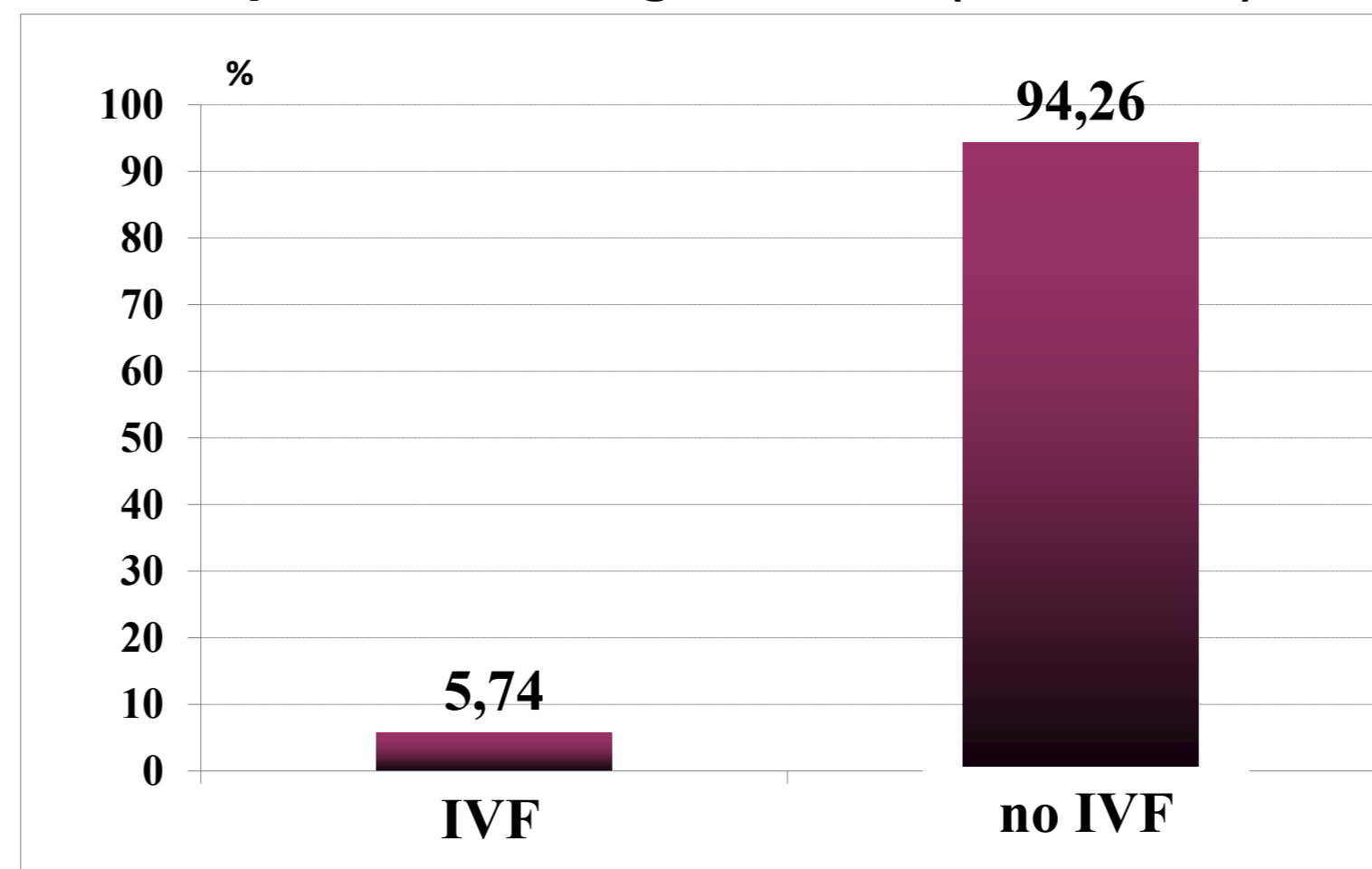
Prenatal diagnostics of gastroschisis: Proportion of IVF gravidities (1998-2015)



Prenatal diagnostics of Down syndrome: Proportion of IVF gravidities (1998-2015)



Prenatal diagnostics of Edwards syndrome: Proportion of IVF gravidities (1998-2015)



Prenatal diagnostics of Patau syndrome: Proportion of IVF gravidities (1998-2015)

